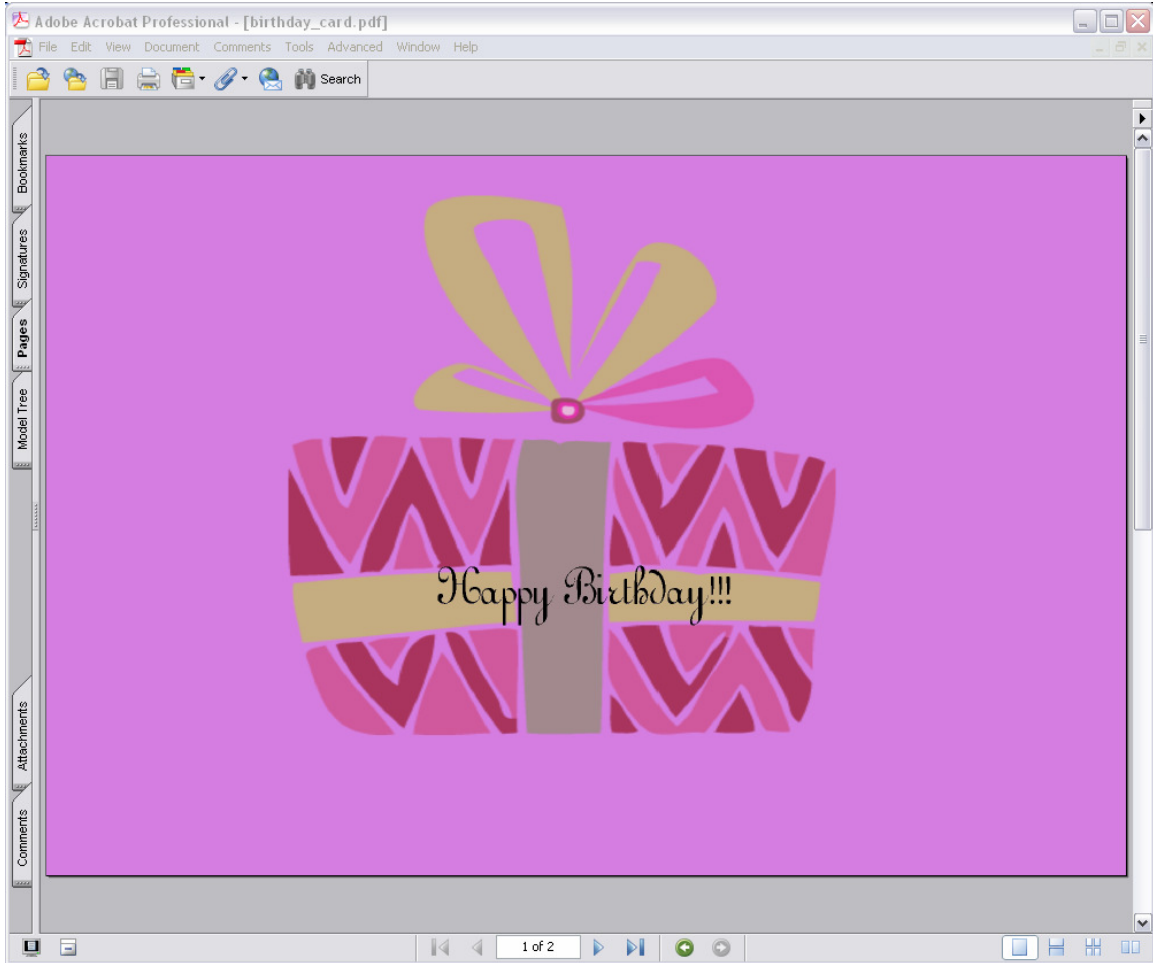
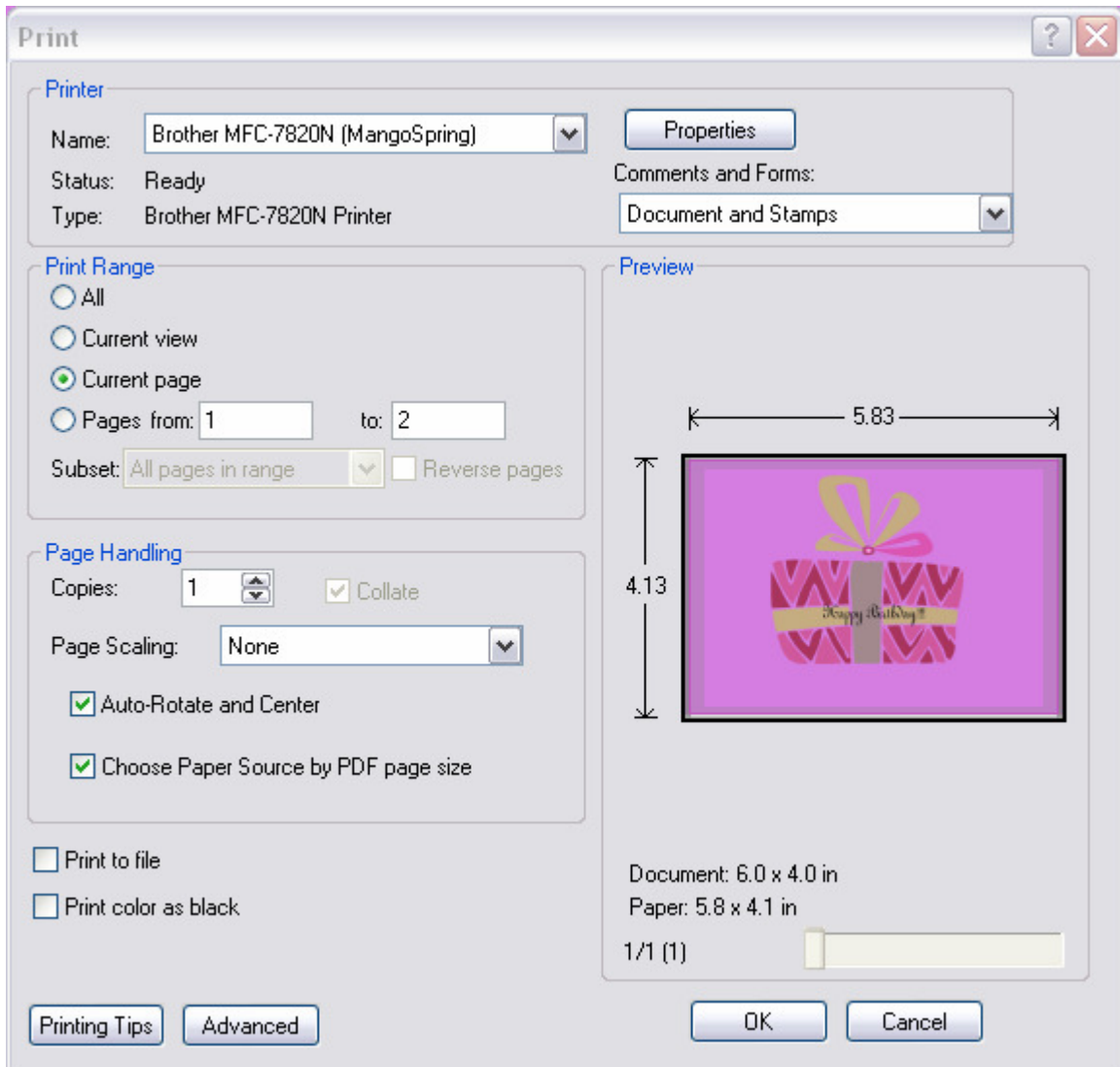


Best Practices For PurpleTrail Design Center Postcard Printing

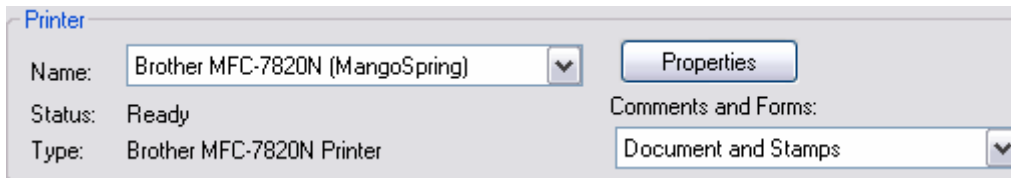


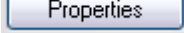
Once you download your PDF, click on the print icon.

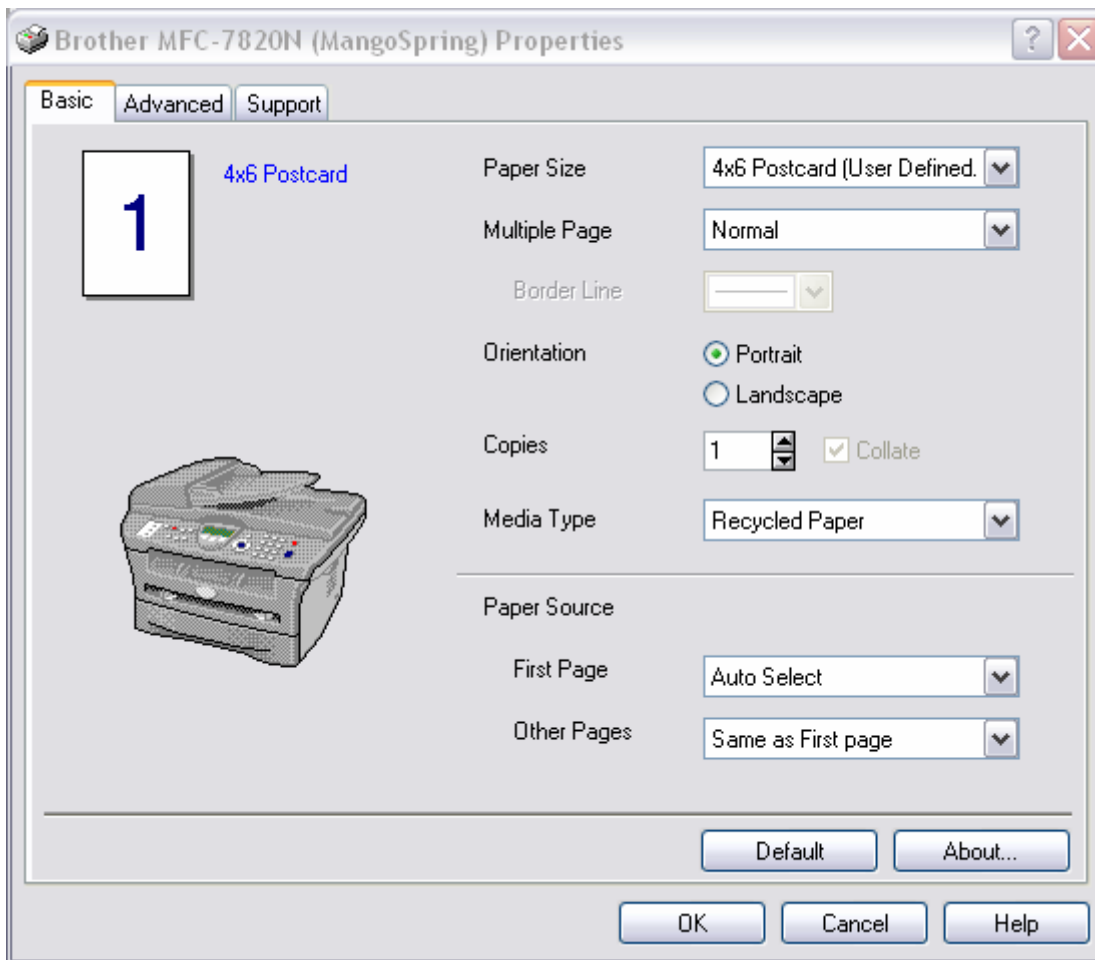




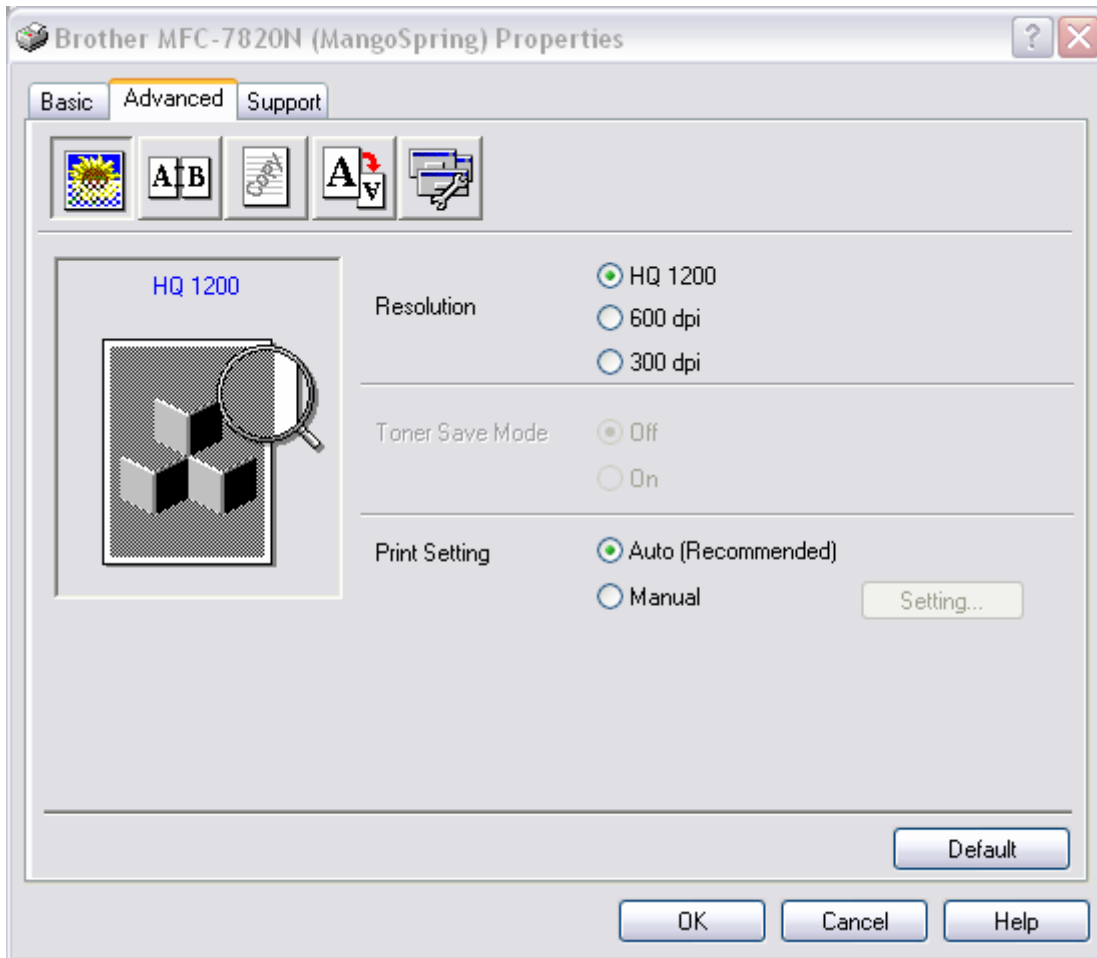
Once in your print settings dialogue box, you'll want make sure you have the right printer selected.



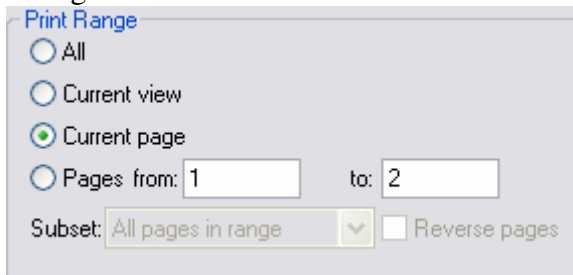
You'll then want to click on the  button to select the orientation, number of copies, media type and paper source.



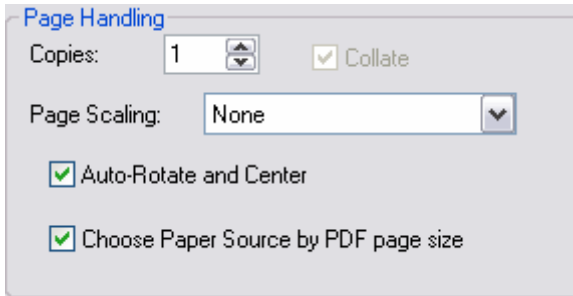
You'll want to select the 4x6 paper size. If that is not an option, choose User Defined and enter in the 4x6 dimensions.



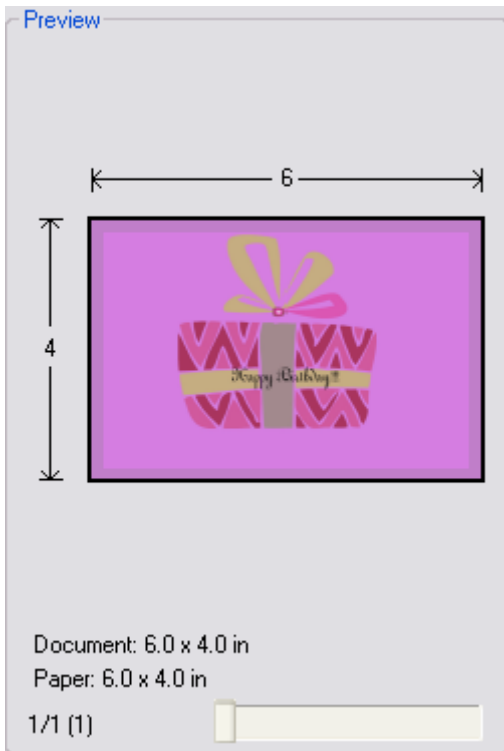
In the advanced tab of your printer properties, you'll want to set it to the highest resolution possible. Once these settings are in place, click OK to go back to the printer dialogue box.



Be sure to select the print range as Current Page



You'll also want to make sure you select the Auto-Rotate and Center option and the Choose Paper Source by PDF page size.



You can see how your postcard will print in the Preview area. Note: most photo /inkjet printers will support borderless printing. If your printer does not, you may encounter a 1/8 to 1/4 border. Click the [Printing Tips](#) button for more in depth printing information. http://go.adobe.com/kb/ts_330714_en-us

Print [?] [X]

Printer

Name: [v]

Status: Ready

Type: Brother MFC-7820N Printer

Comments and Forms: [v]

Print Range

All

Current view

Current page

Pages from: to:

Subset: [v] Reverse pages

Page Handling

Copies: [up] [down] Collate

Page Scaling: [v]

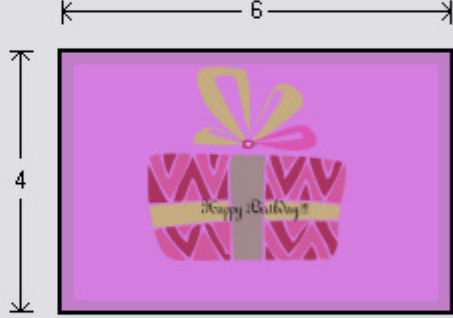
Auto-Rotate and Center

Choose Paper Source by PDF page size

Print to file

Print color as black

Preview



Document: 6.0 x 4.0 in
Paper: 6.0 x 4.0 in

1/1 (1)