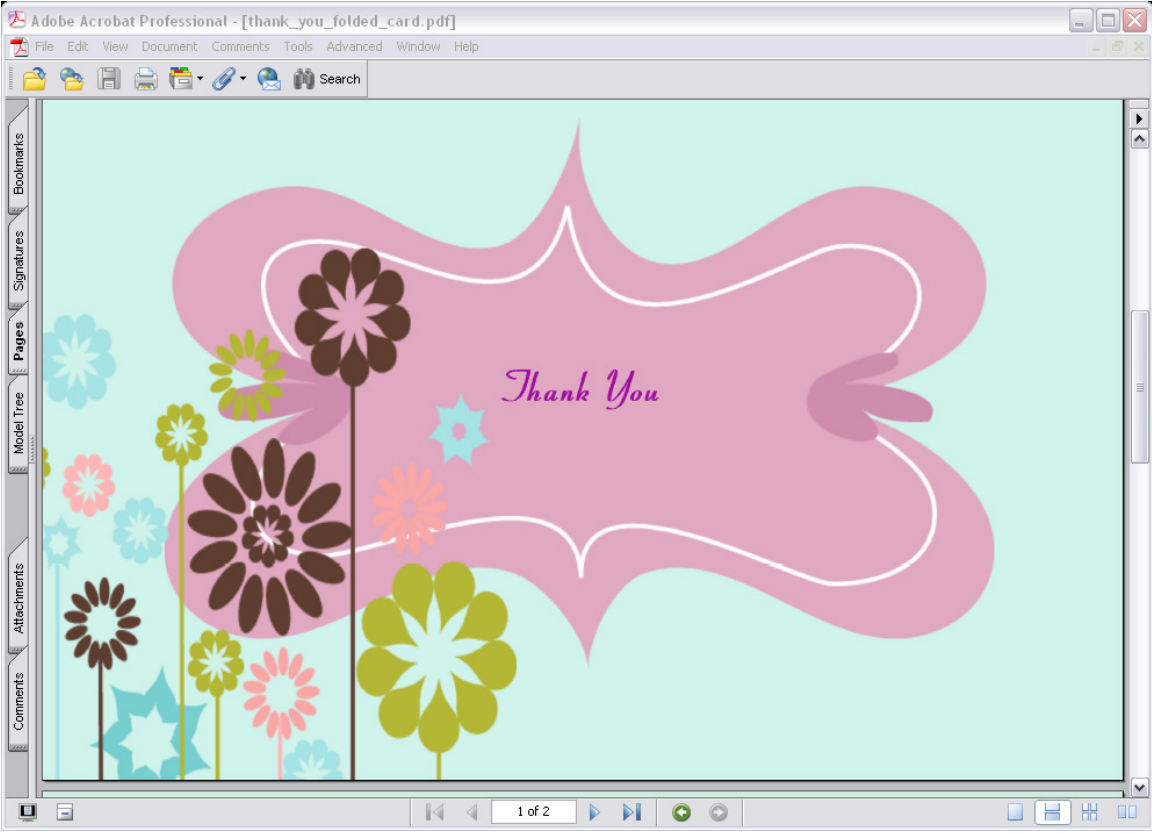

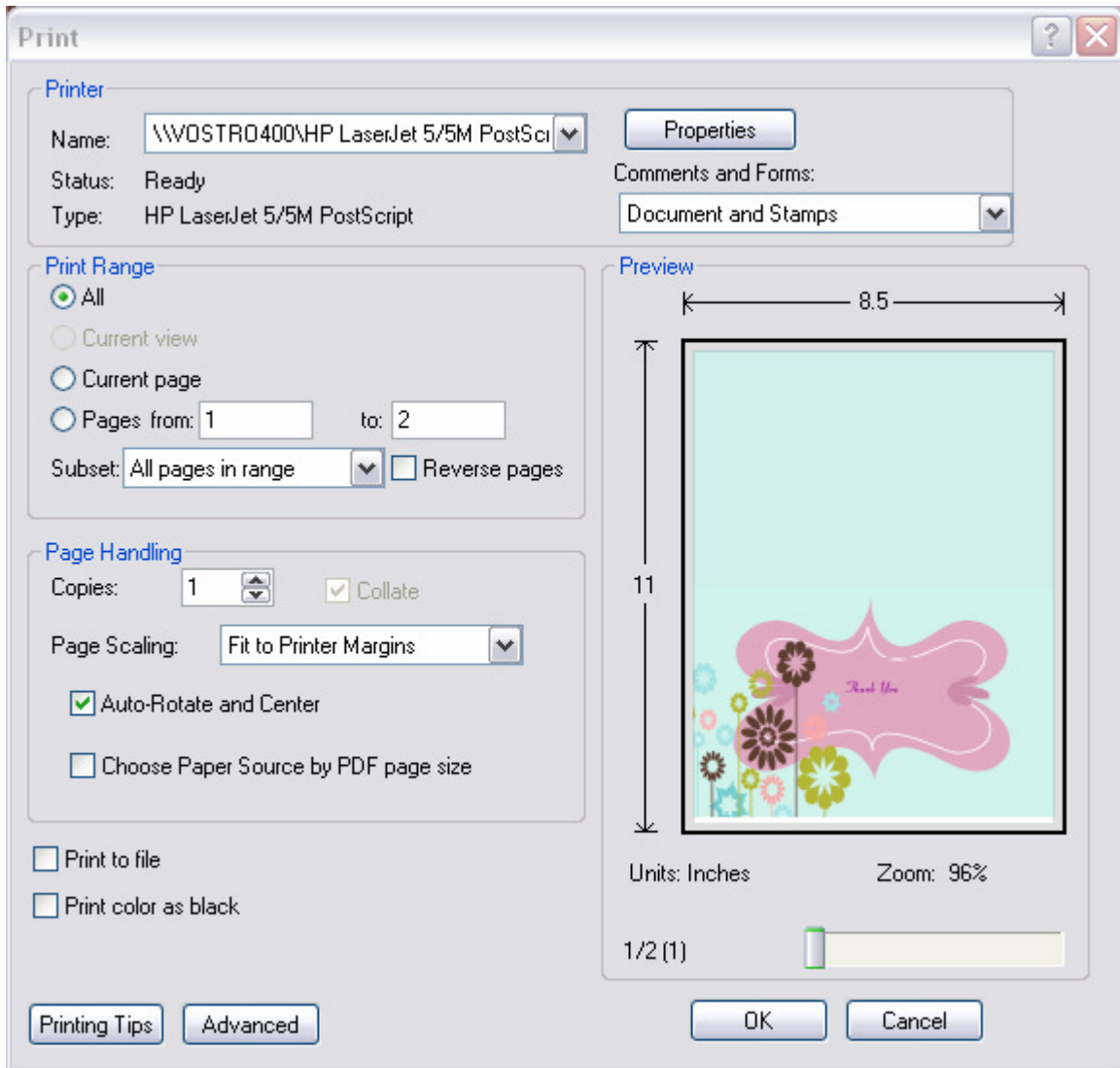


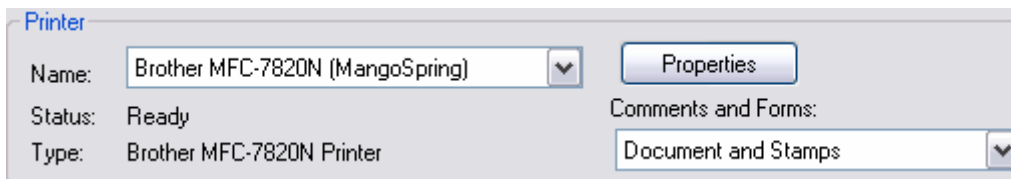
Best Practices for printing PurpleTrail folded cards



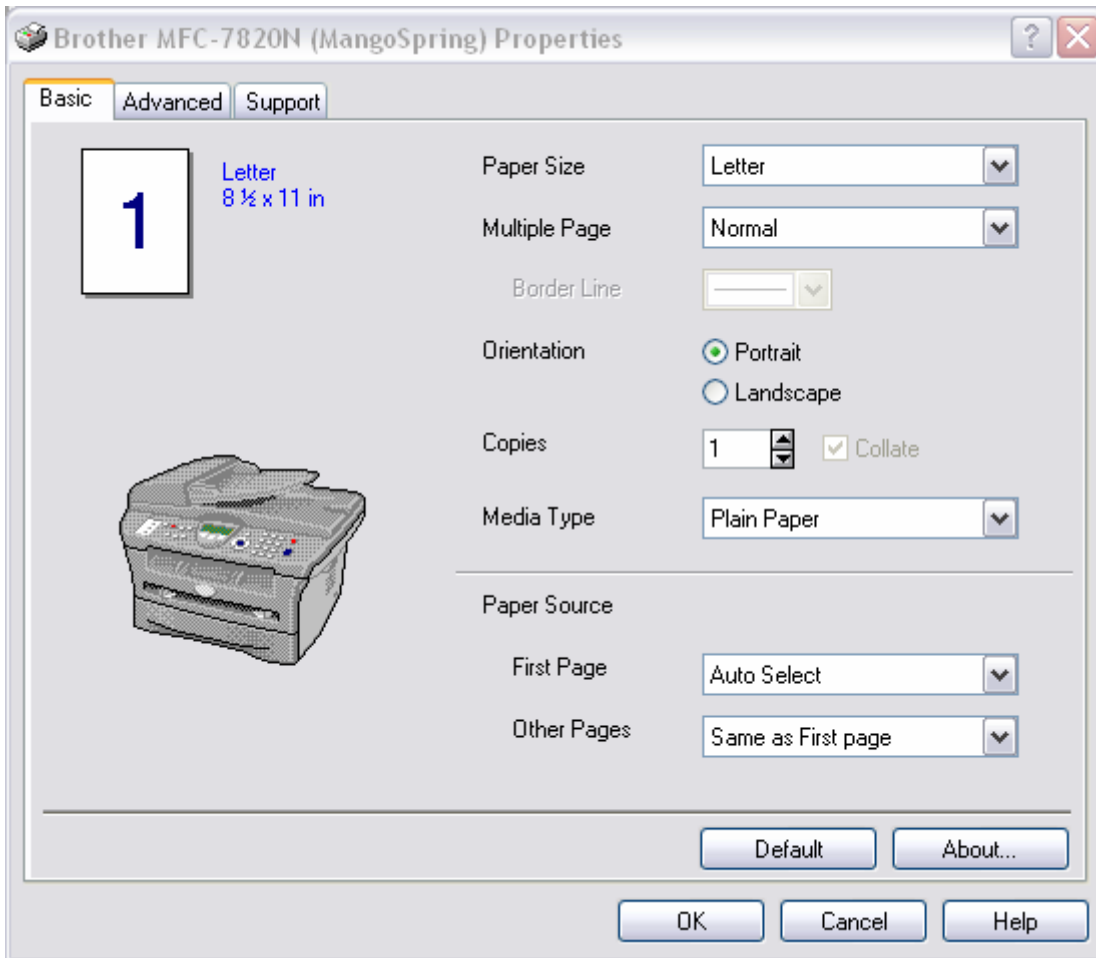
When you open up your design you will see the back of your card at the top of the page and the front of your card at the bottom. Click the print icon. 



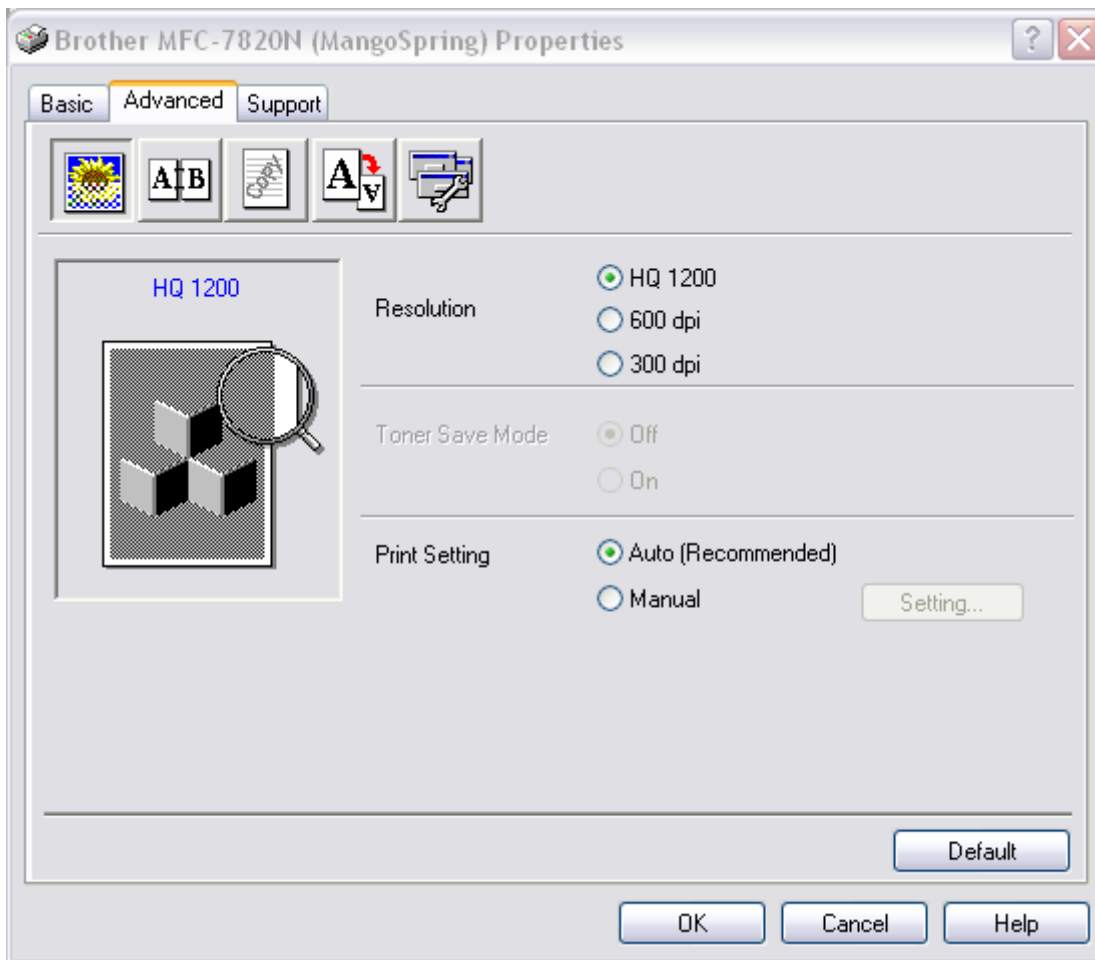
Once you've click print, you can begin to verify that all your settings will support



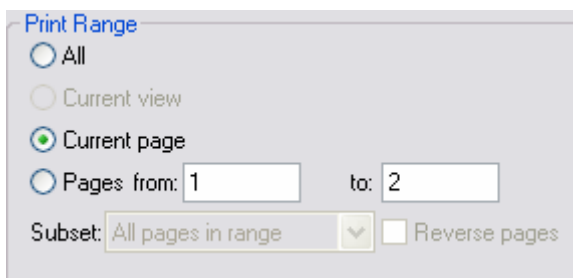
Start by making sure you have selected the right printer. You'll then want to click on Properties button.



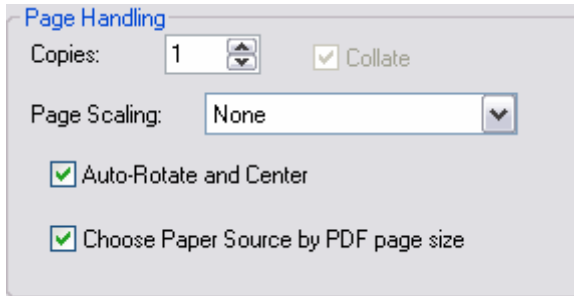
You will then be in the Properties of your printer. In the Basic tab, you can change the paper size. In this instance we can leave it set to Letter since that will work for the folded card. You can also change the orientation and number of copies. Be sure to change the medium type to fit the style of paper you are using (photo, card stock, etc.)



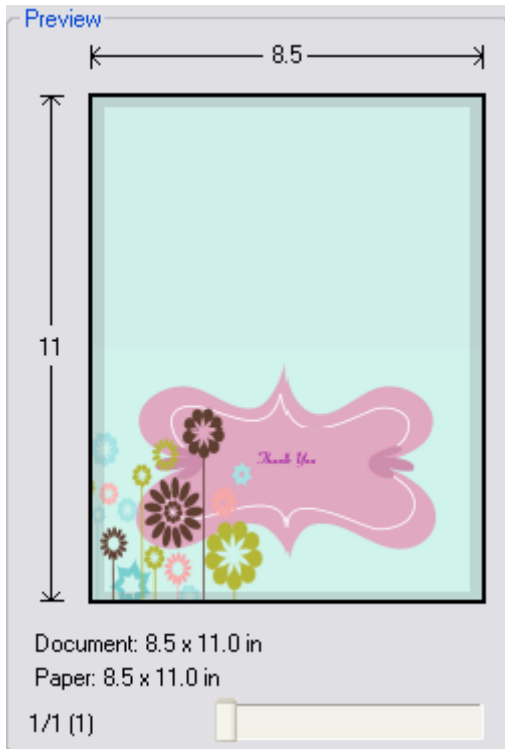
You can then move into the Advance tab of your printer properties. You'll want to select the highest resolution possible. After you've selected all your settings, click OK to be directed back to the main printer options menu.



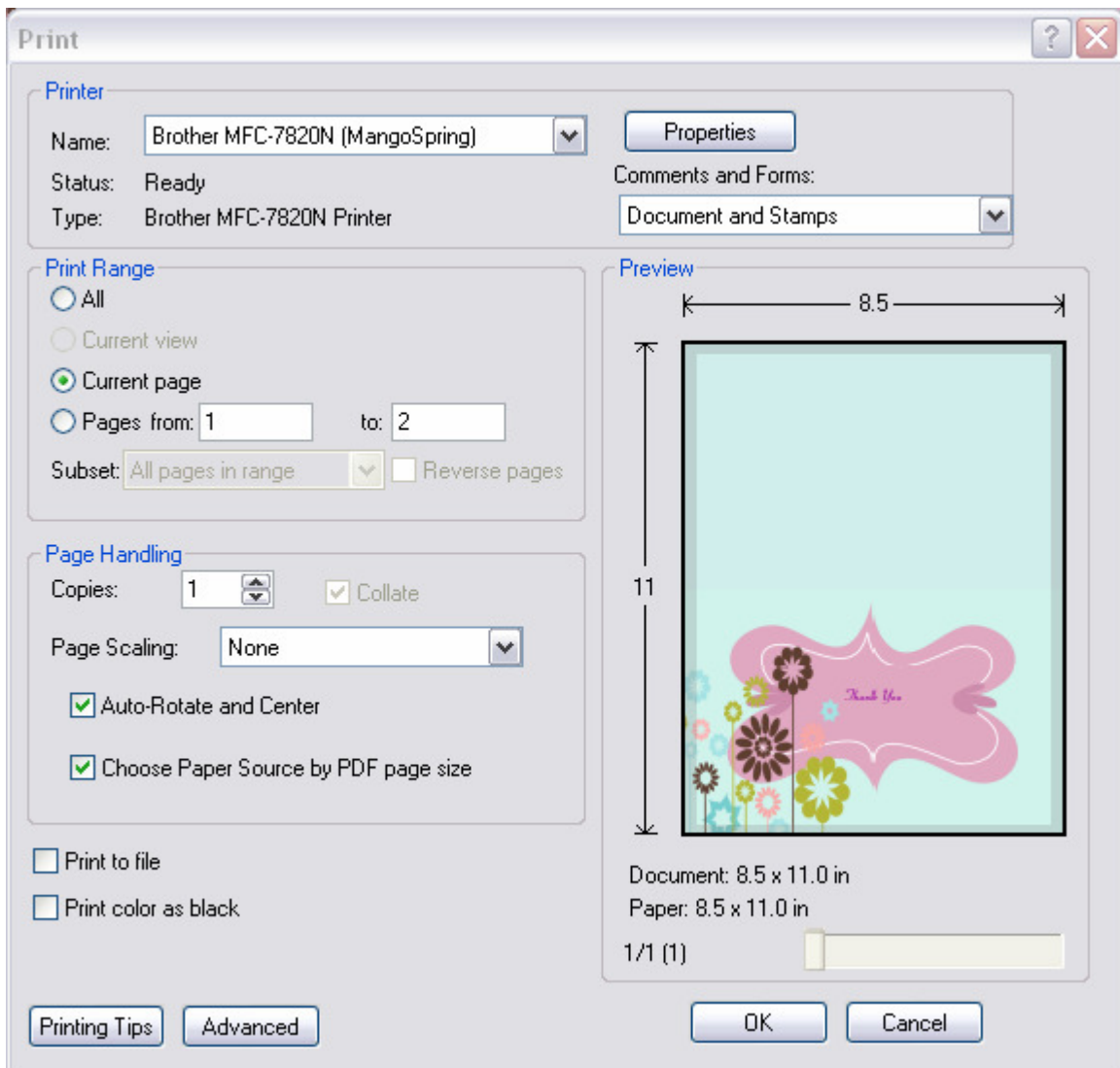
Before you hit print make sure select the print range as Current Page.



In the page handling section, make sure you do not change the page scaling and that you select the Choose Paper Source by PDF page size option.



After you have correctly selected the settings, you should see just how your folded card will print in the preview window. If you feel everything is ready to go, go ahead and hit print!



You can also click on the [Printing Tips](#) button for even more in depth help.
http://go.adobe.com/kb/ts_330714_en-us